

HARBORVIEW DRIVE

NEIGHBORHOOD USE

ROAD-ENDS

RECOMMENDED USES:

Scenic views (Eagle Harbor, Seattle, Mt. Rainier), wildlife watching, and kayaking (landing only - better kayak access at Waterfront Park), walk to beach below ferry terminal, Waterfront Park, or Ferry.



SITE DESCRIPTION:

This gravel pathway leads to no-bank gravel beach access on Eagle Harbor and begins just before condominiums on a clearly marked pathway that connects to Waterfront Park. To get to the ferry terminal, walk up Harborview Drive and turn right down to the terminal. Walk down beach and under ferry terminal pilings for unique perspective.

BACKGROUND/ HISTORICAL INFORMATION/ FUTURE OUTLOOK:

This trail is a public access easement provided by Eagle Harbor Condominiums.

View from site.

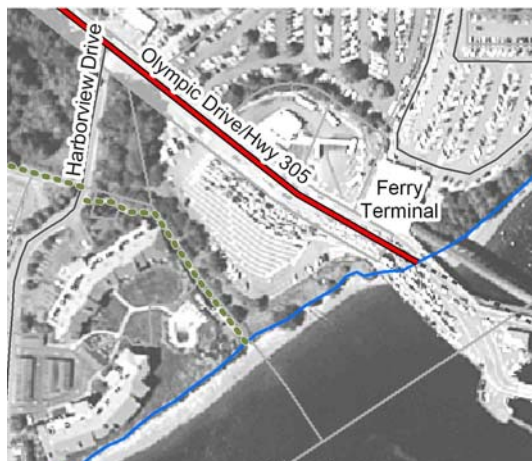


MAP & DIRECTIONS:

47°37.32'N 122°30.73'W

Refer to Eagle Harbor Area map.

Park in Winslow at Waterfront Park or Bjune Drive. Follow the Waterfront Park Pedestrian Trail towards the ferry terminal. Trail intersects Harborview Drive. Find the shore access trail just to the left of Eagle Harbor Condos.



(Waterfront Park or downtown Winslow)