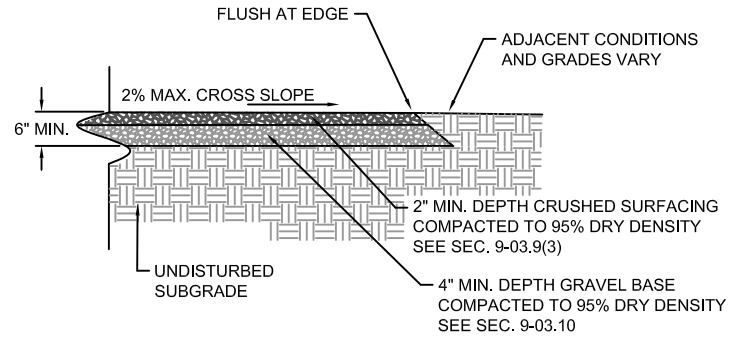
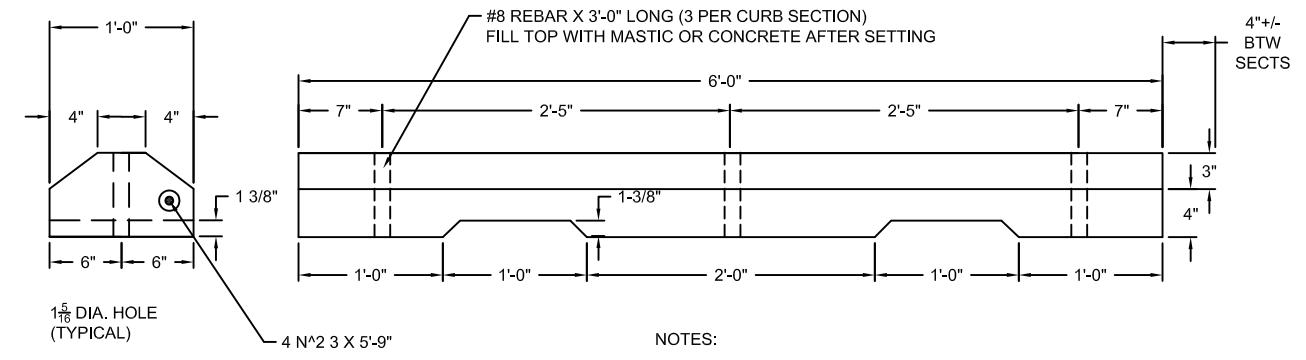


K:\WORKS\080510-CITY OF BAINBRIDGE\080510-04-STRAWBERRY\90% DESIGN\08051002-PL-011 (DETAILS).DWG <C-4> May 17, 2010 4:16:06 PM  
 Filename: 08051002-PL-011 (DETAILS) Section: S-T-N-R-E Drawn By: A. HOOK Checked By: J. SMALL  
 XREF Filename: Surveyed By: SHORIMAN COUNTY AUDITOR PROVIDED BY COBI Date: \_\_\_\_\_  
 Control Monument: \_\_\_\_\_ Field Bk/Pg: \_\_\_\_\_ Vo/Bk Page: \_\_\_\_\_  
 Constructed By: \_\_\_\_\_ Date: \_\_\_\_\_



**1 CRUSHED ROCK PATH DETAIL**  
C-3 SCALE: NOT TO SCALE



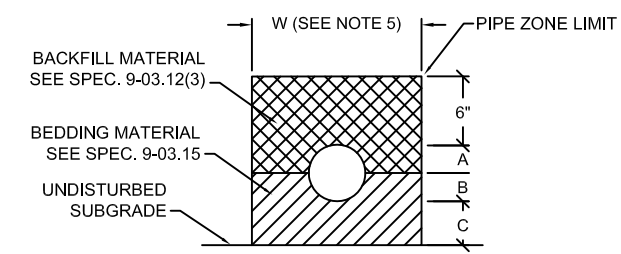
**2 WHEEL STOP**  
C-3 SCALE: NOT TO SCALE



R7-8



**3 MUTCD STANDARD SIGNAGE**  
C-3 SCALE: NOT TO SCALE

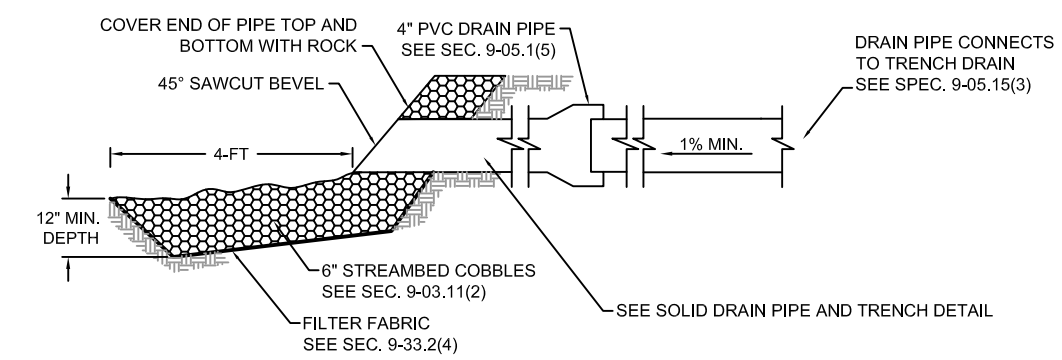


SEE SOLID DRAIN PIPE AND TRENCH DETAIL

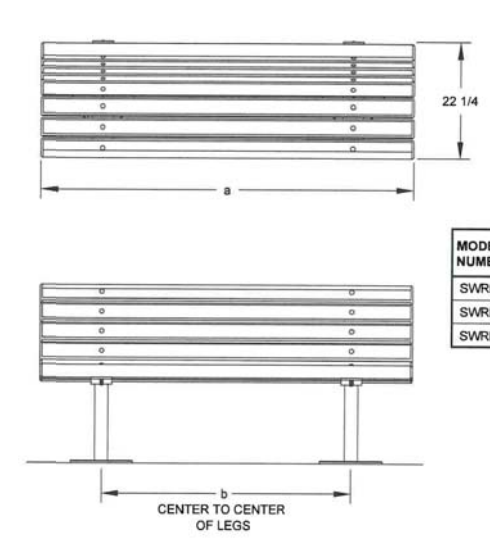
	DIMENSION	
A	4" MIN. 27" & UNDER	6" MIN OVER 27" I.D.
B	1/2 O.D.	
C	1/2 O.D.	

NOTES:

- COBI ENGINEERING STANDARD 10-050
- E UNIFORM SUPPORT UNDER BARREL.
- HAND TAMP UNDER HAUNCHES.
- COMPACT BEDDING MATERIAL TO 95% MAX. DENSITY EXCEPT DIRECTLY OVER PIPE, HAND TAMP ONLY.
- PIPE MUST BE ANCHORED IN SUCH A MANNER AS TO ENSURE FLOW LINE IS MAINTAINED.
- MAX WIDTH = I.D. + 20" FOR PIPE 15" DIA. OR SMALLER.  
= I.D. + 18" FOR PIPE 18" DIA. OR LARGER



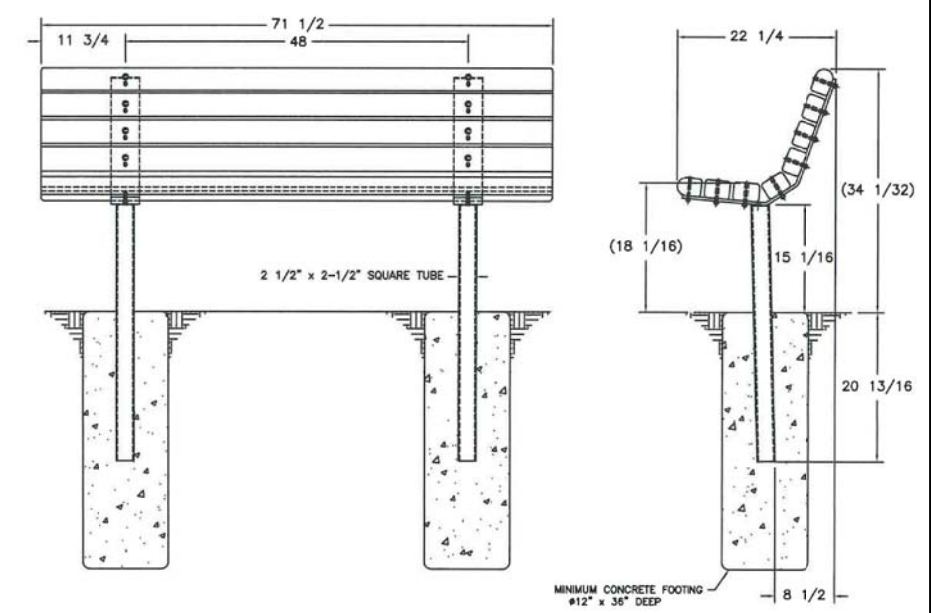
**4 4\"/>**



MODEL NUMBER	DIMENSION	
	a	b
SWRB-4	47-1/2	36
SWRB-6	71-1/2	48
SWRB-8	95-1/2	68

NOTE: LOCAL SOIL CONDITIONS MAY REQUIRE A LARGER FOOTING (CHECK LOCAL CODES)

**5 BENCH DETAIL**  
C-3 SCALE: NOT TO SCALE



NOTES:

- DETAIL PROVIDED BY RJ THOMAS MFG. CO., INC. MODEL SWRB 6 FOOT EMBEDDED MOUNT CONTOUR BENCH WITH 3"x4" LUMBER TIMBERS
- ALL DIMENSIONS IN INCHES
- SEE SPEC SEC. 9-16.9

NO.	DATE	BY	REVISION

THIS PRINT REDUCED  
 HALF  
 SCALE

Scale: Horiz: AS SHOWN  
 Vert: NONE  
 Designed By: SMALL/HOOK  
 Inspected By:  
 W.O. No.:  
 Date: 05-17-10

CITY OF  
 BAINBRIDGE ISLAND  
 ENGINEERING & PUBLIC  
 WORKS DEPARTMENT

STRAWBERRY PLANT PARK  
 SHORELINE RESTORATION



CONSTRUCTION DETAILS

90% DESIGN DRAFT - NOT FOR CONSTRUCTION

Drawing No. <b>C-4</b>
Sheet No. <b>11</b> / <b>14</b>
Of Total